

# 10 Shirley Drive

**BH2021/04525 and BH2021/04527**



**Brighton & Hove  
City Council**

# Application Description

---

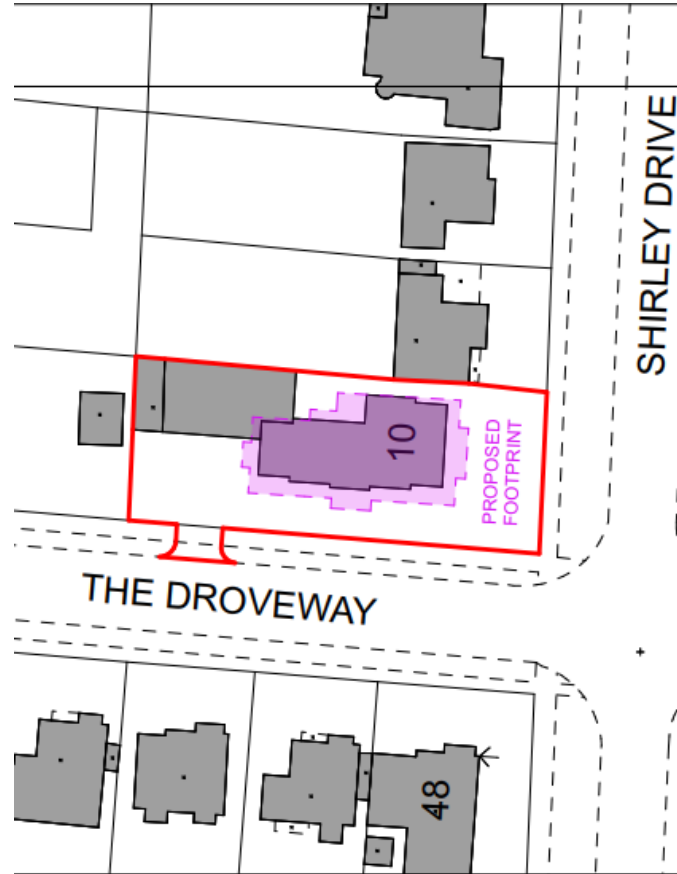
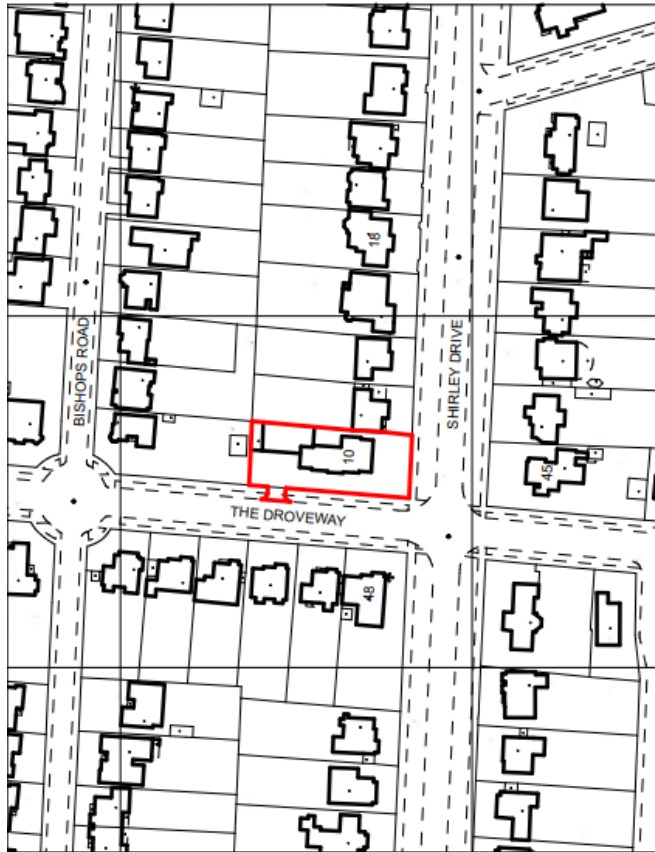
Outline Planning Permission (BH2017/02869) and Reserved Matters (BH2019/03817) previously secured for Demolition of existing dwellinghouse and erection 10x flats.

S73 Proposed amendments to the scheme:

- Change to external materials;
- Minor changes to fenestration detail and placement;
- Minor changes to landscaping features and materials, including bin store area;
- Provision of cycle store details.

# Site Location/ Block Plan

19



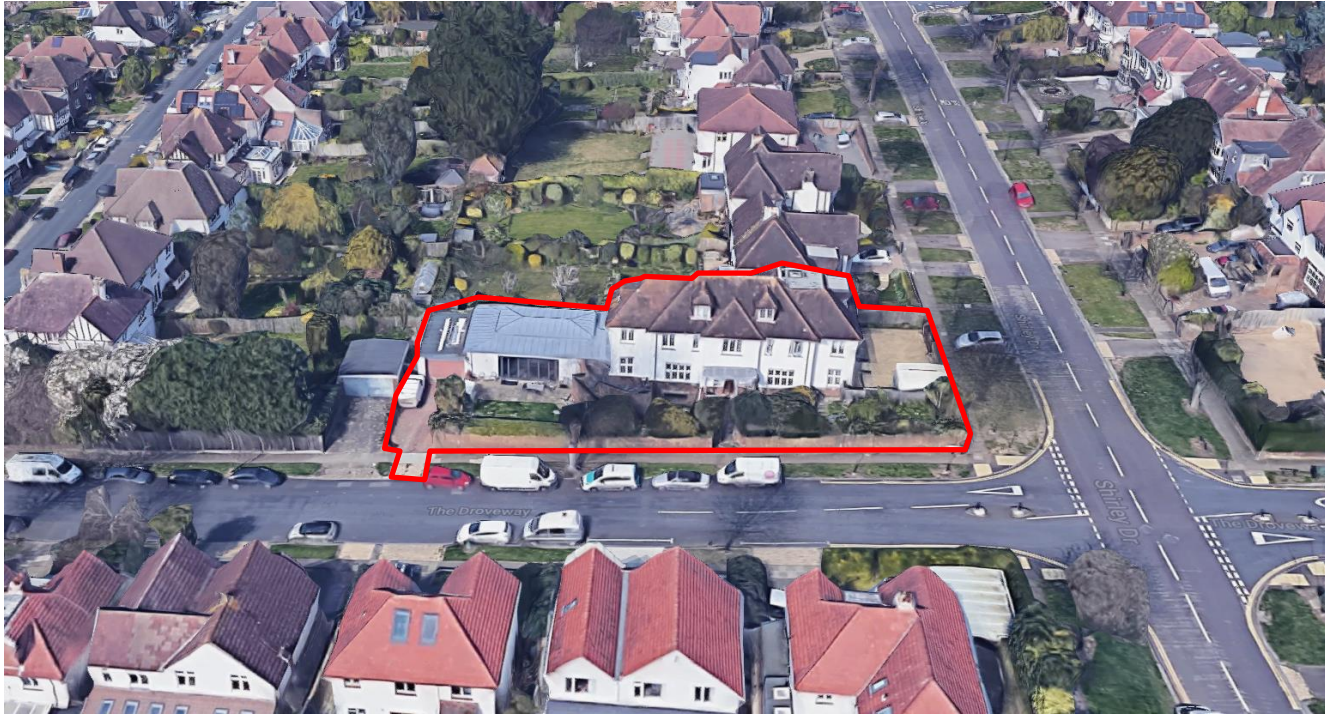
# Aerial photo(s) of site





# 3D Aerial photo of site

---



# Photos of site

---



# Materials

---

Approved:

- Elevations - Marble style tile cladding;
- Projecting Bays - Complementary stone cladding;
- Top storey - Clad in aluminium to simulate the appearance of 'Corten' steel.

Proposed:

- Elevations – Nordic White Brick;
- Projecting Bays and Top Storey - Traditional Grey Multistock Brick



# Proposed Bricks

---





# Approved Visual South



25

# Proposed Visual South

---



COLOUR MATERIAL STUDY

# Proposed Visual East



# Proposed Visual North

28





# Proposed Visual West

---



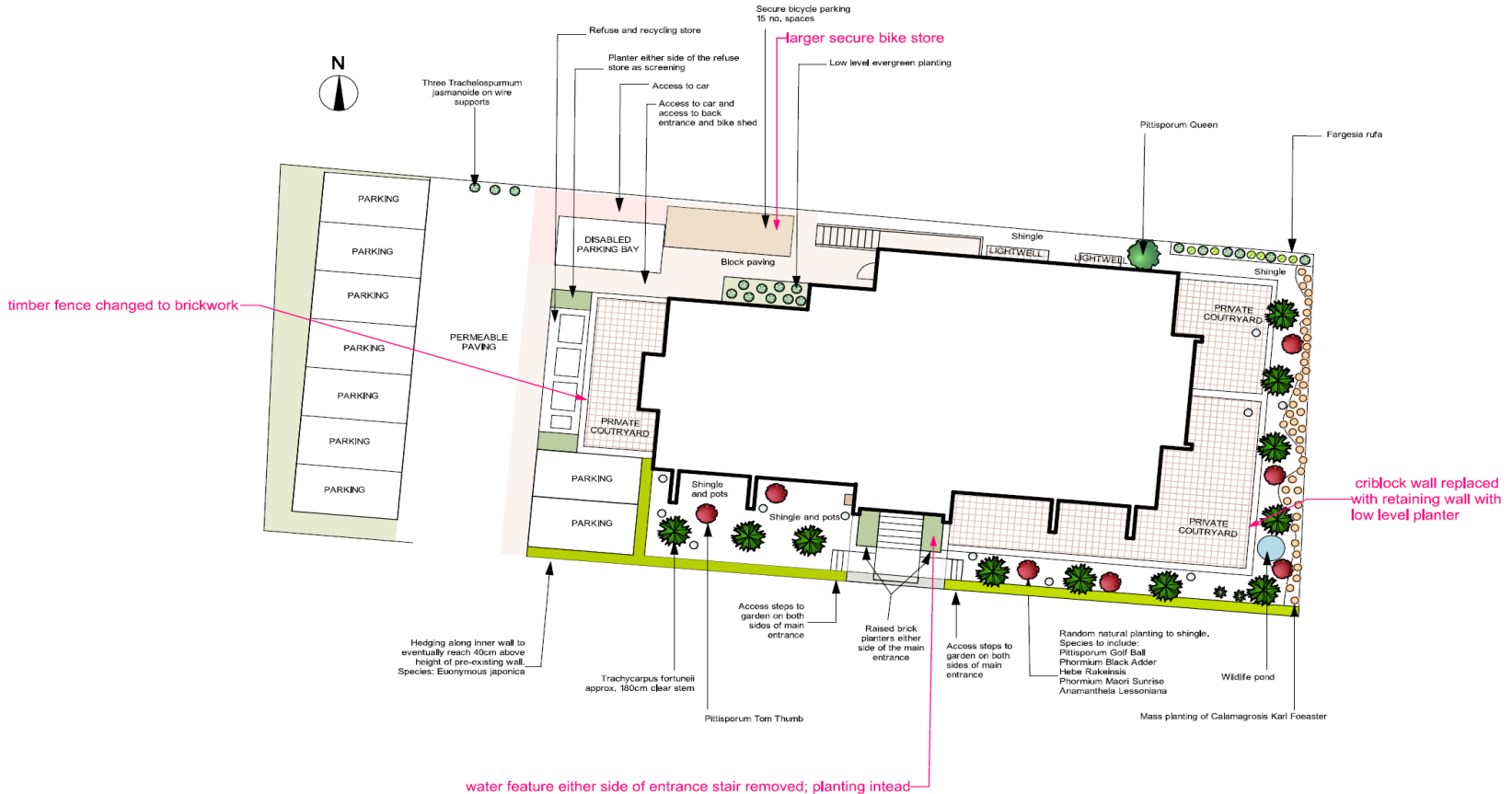
# Proposed Visual

---



ARTIST IMPRESSION OF PROPOSED  
FROM CORNER OF SHIRLEY DRIVE & THE DROVEWAY

# Proposed Landscaping Plan



# Conclusion and Planning Balance

- Proposed external materials acceptable;
- Changes to layout very minor;
- Cycle parking provision acceptable;
- No increased impact on neighbours;
- New conditions re bee bricks and swift boxes;
- Approval recommended.